

## VOLT AND PHASE DETECTOR



# 3123

A new phase detector with voltmeter and electro-scope!

■ Rotating disc type phase detector

The phase sequence of the three-phase power can be seen by noting the direction of rotation of the disc.

■ Combined with a voltmeter and electro-scope in a single instrument.

100V and 200V voltage check of single phase three wire systems and earth wire and phase lack are readily found with the one instrument and in this way incorrect wiring can often be prevented.

■ Small and portable

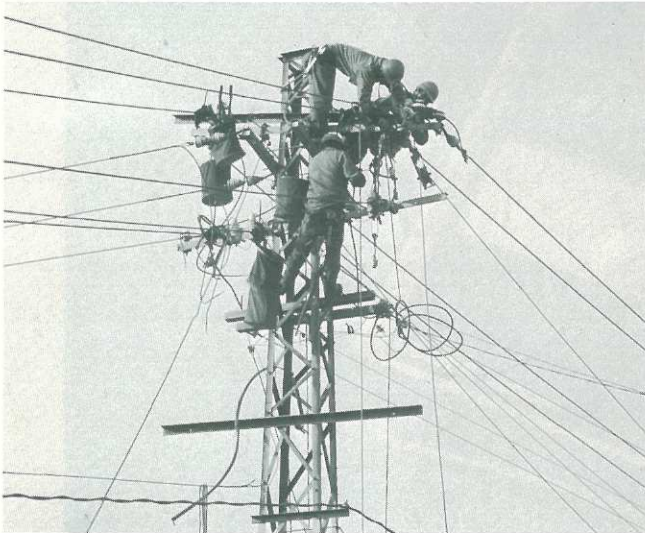
Easy to use and conveniently shaped for handling.

# Ideal for checking either inside or outside wiring jobs

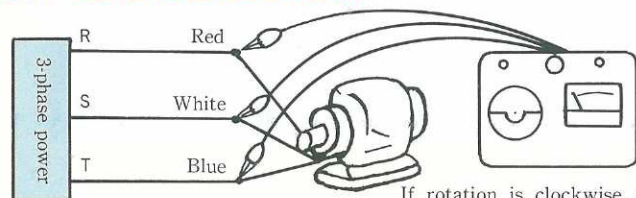
Here is the scope of the testing capability of the 3123 Volt and Phase Detector.

- The phase detector checks phase order in three-phase power.
- The electroscope detects earth wires and indicates whether there is a phase lack or not.
- Voltage is checked with the voltmeter.

This versatile instrument proves its worth in three-phase motor installation, three-phase wiring jobs and 100V or 200V lead-in connection for single-phase, three-wire systems and earth line checks, etc. in indoor or outdoor projects.

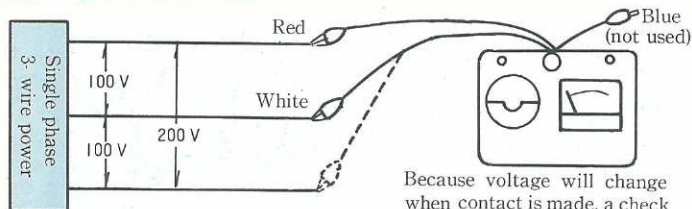


## ■ PASE DETECTOR



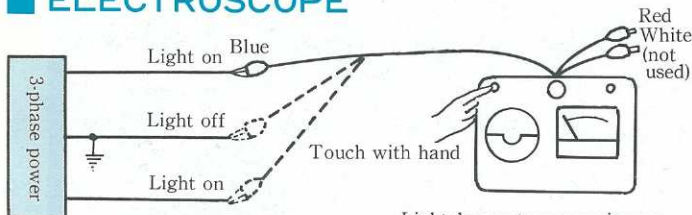
If rotation is clockwise, the phase order is correct and there is no phase lack.

## ■ VOLTMETER



Because voltage will change when contact is made, a check is required.

## ■ ELECTROSCOPE



Light does not come on in case of earth wire.  
If light fails to come on for two or more places this indicates phase lack.

## ■ SPECIFICATIONS

### ● Phase Detector

Voltage range for use: 220V ~ 450V

Allowable length of time for use:

220V ..... 30 mins.

440V ..... 5 mins.

Frequency for use : 40Hz ~ 70Hz

Cords used : Red(R), white(S) and blue(T)

### ● Voltmeter

Reading range : 0 ~ 500V AC (Red scale for 100V and 200V)

Cords for use : Red and white (Blue cord not used)

### ● Electrocope

Max. circuit voltage for use:

250V AC

Cord for use : Blue (Red and white not used)  
Electroscope terminal touched with the hand.

● Dimensions and weight : 150H × 165W × 75D mm approx, 860g

# HIOKI

HIOKI E.E. CORPORATION

HEAD OFFICE : P.O.Box 1, Sakaki, Nagano, 389-06 Japan

Tlx: 3327508 HIOKI J / Cable: HEWLOV, Ueda

Telephone: (02688)2-3030

TOKYO OFFICE: 2-23-24 Shiba Nakata, Kawaguchi, Saitama 333

Telephone: (0482)61-2401

HIOKI-RCC, INC.: 198 Route 206 South Somerville, N.J. 08876 U.S.A.

Telephone: (201)874-6484